

# BLYTHBURGH

## FOCUS

SERVING BLYTHBURGH,  
BULCAMP AND HINTON

Issue No.43

<http://blythburgh.onesuffolk.net>

January/February 2019



## Protecting the soul of Blythburgh

Residents often ask about the parish council's input into the determination of planning applications. To be clear, the parish council can only advise, with the district council making the decisions. Some matters of concern are illustrated by applications considered during 2018. Questions about design, access, the conservation area, listed buildings and 'development creep' come up again and again.

An application to build a four-bedroom bungalow on the land behind Lion House was rejected. A modified application for a three-bedroom bungalow was withdrawn. Objections included the failure of the designs to complement the conservation area, and that the access point was unacceptable.

After a lengthy process the conversion of a Hawthorn Farm barn to a residence was accepted, plus a bungalow replacing another barn. An original proposal to build a new house behind listed Hawthorn Farmhouse was dropped. There was much discussion about the safety of the entrance to the site because of its proximity to the bend with Angel Lane. The Highways Authority would not object because of existing use. The new entrance has been moved and a pavement provided.

The development of 4 Angel Lane (Dolphin House) has also been protracted. First, an integral double garage was converted into accommodation (not requiring planning

permission). Then came an application to build a second storey over the new room, a single storey extension to the rear, and a double garage in the front garden. The garage was withdrawn and a modified scheme approved.

The garage proposal was then resubmitted for pre-application advice. Over-positive advice was received and this over-rode the planners' objections. A further application to bring the recessed part of the front of the house forward of the building line was then approved. The parish council's objections about the over-development of the site and the loss of the green aspect of Angel Lane were rejected.

Amberley Close is now well established but the council's hopes for a fully-residential contribution to the village have not been realised. The developer was able to avoid building affordable homes and two of the new four-bedroomed houses are advertised as holiday lets. A proposal to add another five houses to the development has been rejected.

The tourist industry is important to the area and Blythburgh makes a generous contribution. Apart from B&Bs and holiday lodges, some 35% of the 230 residences in the parish are not permanently occupied. Thirty five of the 55 Blyth View residences are second homes or holiday lets.

**Alan Mackley, Chair, Parish Council's  
Planning Advisory Group**

# NEAL'S *PRIVATE HIRE*

Airports. Local & Long Distance  
Friendly Reliable Service



4 -8 Seaters  
Available

**01502 575 888**  
**Mob: 07899 011383**

## **Confused with computers...let us help**

Technology is moving at a fast pace and it's hard to keep up with everything.

Do you need help with:

Purchasing laptops, tablets, 2 in1, WiFi set up, setting up your computer,  
surfing the net, sending emails, printing etc.

For more information contact

Ken McKenzie, Silver Surfer Training

[Ken.mckenzie1234@gmail.com](mailto:Ken.mckenzie1234@gmail.com)

Phone: 01329 640580 or 07746 477054



## Home thoughts from a broad...



### TRAFFIC WATCH

The Gateway at the start of the 30mph limit on the north side of the village was installed in November and it will be interesting to see what difference this makes to the figures. The A12 southbound traffic was monitored with the VAS during December and the results are encouraging but as this covered the holiday period it would be wise to allow more data to accumulate before reaching any conclusion. The data logger will be monitoring this position during January which might give a more accurate picture.

**A12 Northbound:** November with the data logger (no display). Overall the figures are similar to previous records; similar to last May but 2 points worse than August with 84% (3,493 vehicles per day) driving at an acceptable speed, 16% illegally and 14 vehicles highly illegal. During the days 88% were acceptable, 12% illegal and 3 vehicles per day highly illegal. At night the figures were 62% acceptable, 36% illegal and 1.8% (11 vehicles per night) highly illegal. Late at night the acceptable dropped to 55%, illegal rose to 41% (72 per night) and the highly illegal to 3% (6 per night).

**Dunwich Road Northbound:** November by the VAS in November. The figures are similar to May but roughly 2 points worse than August. Overall 90% (1046 vehicles per day) were driving at an acceptable speed (0 -35 mph), 10% were driving at illegal speeds (35 - 55mph) and 5 vehicles over the whole period monitored were driving at highly illegal speeds of over 55mph. During the days (07:00 to 19:00) 92% were acceptable and 8% illegal and at night (19:00 to 07:00) 72% were acceptable and 28% were illegal. Late at night (22:00 to 05:00) 75% were acceptable with 25% illegal.

**A12 Southbound:** December by the VAS. Overall 75% (4711 vehicles per day) were acceptable, 25% illegal and 0.5% highly illegal. During the day 78% were acceptable, 22% were illegal and 7 vehicles a day were highly illegal. At night it was 50% acceptable, 47% illegal and 3% highly illegal. Late nights were 45% acceptable, 50% illegal and 8 vehicles per night highly illegal.

**Roderick Orr-Ewing**



## Restaurant and bar

### Bar Opening

Mon – Thurs  
11.00 to 15.00  
18.00 to 23.00

Friday  
11.00 to 15.00  
18.00 to 23.00

Saturday  
11.00 to 23.00

Sunday  
11 to 22.30

### Food opening

Mon – Thurs  
12.00 to 14.00  
18.00 to 21.00

Friday  
12.00 to 14.00  
18.00 to 21.00

Saturday  
12 to 15.00  
18.00 to 21.00

Sunday  
12.00 to 20.00

## Events at the White Hart 2019

Quiz Nights, the third Tuesday of each month at 7.30pm. Max 4 people per team. £4 per person of which £1.50 goes to the winning team and £1.50 to Blythburgh church/Blyth Belles. Booking essential.

Psychic Supper 27th February 7pm - 10pm. A two course meal and an evening with clairvoyant Steven Treadaway, £28.00 per person. Tickets available from the bar or call 01502 478217. A £5 non-refundable deposit required to secure your booking. Smaller groups may be asked to share a table with others. Food must be pre-ordered at least two days before the event.

First Friday in each month film night in village hall with pre-show fish and chips. £8 or £6 small. Bookings only.

**01502 478217**

## BLYTHBURGH REFLECTIONS

# Mysterious holes, unexpected bravery

At Christmas a big hole opened up in the church car park (don't worry Alan R made it visible with a large traffic cone). To all intents and purposes it appeared to be part of an old drainage channel which reminded me that what is now a car park, used to be part of the farmyard for Church Farm.

Probably the most "famous" person farm Church Farm is Peter Wright. Peter was born in Mettingham in 1916. He enlisted in the Coldstream Guards in 1936 and was posted to the 3rd Battalion serving in Egypt and Palestine. During World War II he served with the battalion seeing active service in the North African and Italian campaigns before, in January 1944, being posted to the Training Battalion in England where his duties included guarding Chequers.

Following his discharge to the Regular Army Reserve in March 1946 Peter returned to Suffolk, married Mollie Hurren (from Wenhaston) and moved into Church Farm. After a time, Peter and Mollie were offered, and moved to, a "better farm". When they left in 1957, Michael Easy took over Church Farm and he has fond memories of the Wrights.

Michael was just 17 years and 9 months old when he took sole charge, becoming the youngest farmer in the country. He openly admits this brought challenges but Peter Wright had allowed him to come on board early and start taking over the reins so he would hit the ground running when the Wrights moved on: it's worth remembering the significant lead time you need before you can harvest an agricultural crop or generate cash flow from rearing animals.

Michael recalls a number of things about Peter: he was physically big standing at 6 foot 3 inches. He was a kind and modest man of few words but when he needed to get your attention his voice was the stuff of legends. Michael recounts an occasion when he was standing in the farmyard with Peter. Peter spotted a car coming over the hill into Blythburgh. Inside was an occupant he wanted to have a word with... suffice to say that Peter had no trouble attracting his target's attention and he duly swung into the farmyard for a chat. Maybe that was the Sergeant-Major in him.

That brings me back to just what Peter Wright did that was so extraordinary. You already know he served in the 3rd Battalion of the Coldstream Guards but what you perhaps don't know is that Peter was a recipient of the Victoria Cross (VC), awarded to members of the British Armed Forces for gallantry "in the presence of the enemy". It is the most prestigious award of the British honours system and has been awarded just 1,358 times since its introduction in 1856.

Peter's Citation relates to his actions on 25 September 1943 near Salerno, Italy. With most of the battalion officers dead he took charge and, single-handedly, continued the assault. He silenced three German machine gun posts before leading his men to consolidate this strategic position. In the face of heavy fire, he beat off a counter-attack and brought up extra ammunition.

The full text of his Citation can be found in Wenhaston Village Hall.



**Sonia Boggis**

**A message for all newcomers to Blythburgh: If you have come to the village in the last three years and not received a welcome pack please contact David Tytler on 01502 478521 or email [davidtytler@btinternet.com](mailto:davidtytler@btinternet.com)**

## NEWS FROM HOLY TRINITY

# The centre of Christmas cheer

Your local church became a definite centre of attraction over the Christmas period. We had a record-breaking attendance of 190 at the Festival of Lessons and Carols, with close to 40 at the Crib Service, 90 plus for Midnight Mass and over 80 on Christmas morning.

Also, congregations (and the villagers who sang carols door-to-door) were hugely generous, meaning that we'll be able to divide around £1,500 between our two nominated Christmas charities:

Embrace the Middle East and the Lowestoft based Community Access Trust's Thin Ice project.

The church looked spectacular, thanks to the Ireland/Hockedy families' generous donation of candles and decorations that were provided for the wedding of Amelia Ireland and Tom Hockedy in the immediate run-up to Christmas. Thanks too must go to the diligent village volunteer cleaning team who have swung into action since the summer – the church has never looked so spotless.

So far 27 people have taken up Colin Huggins' offer of free tours of Holy Trinity every Thursday at 11am. He says: "These were mainly people passing by around 11am who took up the offer when I told them a tour was available. It included four people who had seen the tours mentioned in the local church magazine *Heart & Sole*." There is no need to book. Children are welcome, but they must be accompanied by an adult throughout the tour.



**Blythburgh with Bulcamp and Hinton Parish Council** agreed the 2019/20 budget proposal at its January meeting. The budget showed an estimated increase in core spending of £90, plus additional funding for work on the Village Hall driveway and provision for the May 2 local election costs. There would be a deficit of £600 if the current precept of £7390 was kept. Councillors agreed a modest increase in overall precept of £160 which means that the total precept raised in 2019/20 will be £7550 for the full year.

## YOUR PARISH COUNCILLORS

**Chair: David Tytler**  
01502 478521

**Planning advisory group: Alan Mackley**  
**Cliff Waller and Sonia Boggis**

**Finance advisory group**  
**Roderick Orr-Ewing**  
**Jeff Sutton and Jim Boggis**

**Councillor, Jo Waller**  
**Clerk: Jim Boggis 01502 478687**

## BLYTHBURGH ASSOCIATIONS

**Blythburgh Latitude Trust**  
**Jim Boggis 01502 478687**  
**Village Hall and Film Club**  
**Olive Forsythe 01502 478521**  
**Horticultural Society**  
**Jenny Allen 01502 478314**  
**Blythburgh Matters**  
**Ro Williams 01502 478484**  
**Blyth Belles**  
**Sarah Wickham 070810632987**

# ***The Blythburgh Latitude Trust is making grants***

**The Blythburgh Latitude Trust makes grants to individual parishioners, families and organisations to meet specific needs. For your grant, contact the honorary administrator, Jim Boggis, Marsh End, Church Road, (478 687)**  
***All applications will be treated in complete confidence.***

## **Apply now**

**The trustees are Jenny Allen, chair, Lucy Clapham, Michael Nicholls, David Tytler and Harry Waller. All enquiries to the honorary administrator, Jim Boggis, Marsh End, Church Road, (478 687)**



## NORTON PESKETT SOLICITORS

A local  
firm with a  
world of  
experience



### For you

- ♦ Buying and selling your home
- ♦ Re-mortgages and transfers of equity
- ♦ Wills and probate
- ♦ Court of Protection
- ♦ Family and children matters
- ♦ Criminal matters
- ♦ Personal injury claims
- ♦ Civil matters
- ♦ Notarial services
- ♦ Care home fees
- ♦ NHS continuing healthcare
- ♦ Trusts and deceased estates

### For your business

- ♦ Commercial property
- ♦ Partnerships
- ♦ Employment matters
- ♦ Planning and regulatory issues
- ♦ Licensing
- ♦ Company formations
- ♦ Agricultural law

Lowestoft,  
148 London Rd North  
T: 01502 533 000

Beccles  
Exchange Square  
T: 01502 718 700

Gorleston  
66a Bells Road  
T: 01493 652 204

Great Yarmouth  
141 King Street  
T: 01493 849 200

Halesworth  
52 Thoroughfare  
T: 01986 872 513

[enquire@nortonpeskett.co.uk](mailto:enquire@nortonpeskett.co.uk) [www.nortonpeskett.co.uk](http://www.nortonpeskett.co.uk)

No hidden costs

Same day response

# **MRWCF Electrical**

***\*Domestic and commercial***

***\*Rewires \*Extra sockets/lights***

***\* P.A.T. Testing***

***\*Inspection and testing***

**CALL FOR FREE ESTIMATE**

**24 HOUR CALL OUT**

**TEL/FAX: 01502 478473 MOBILE: 07884 477110 / 07717 176655**

**Email: MRWCFElectrical@hotmail.co.uk**



**NAPIT** *National Association of  
Professional Inspectors and Testers*  
**\*CITY AND GUILDS QUALIFIED**





# THE STAR INN



Set in the beautiful rolling Suffolk countryside, The Star has open fires in the winter and a good selection of traditional bar games, the large garden has a boules pitch to enjoy in the summer.

The range of real ales and home cooking using local ingredients make The Star a popular choice with locals and visitors alike.

Come and visit us and see the doom at St. Peter's church or take a walk on one of the five commons of Wenhaston.

For those wishing to stay in the area, camping at The Star is available by prior arrangement.

We are open every day from 12 noon-3pm & 6-11pm  
Open all day on Sunday from noon – 11pm.

Food is served daily from 12.30-2.30 & 6.30-9.00pm

**The Star Inn  
Wenhaston  
Halesworth  
Suffolk  
IP19 9HF**

**01502 478240  
[www.WENHASTONSTAR.CO.UK](http://www.WENHASTONSTAR.CO.UK)**

**PHOTOGRAPHY EXHIBITION**

Chrissie Kitchen, Candy Blackham,  
Nick Eade, & Geoff Moore are  
exhibiting exciting new photographs!  
Wildlife, landscape, street photography &  
architecture

Friday 12 April 2019, 18.00-20.00

Pay Bar & Nibbles

Saturday 13 April 2019, 10.30-17.00

Tea & Yummy Cakes

CRATFIELD VILLAGE HALL, IP19 0DJ

**FREE ENTRY**

Donations to Halesworth Dementia Care Fund &  
Macmillan Cancer Support

Further information: [candyblackham@gmail.com](mailto:candyblackham@gmail.com)

# **MANTINS**

## **SOLICITORS & NOTARIES**

Providing you with the very highest quality client  
care and legal advice in the following areas:

**Residential and Commercial Conveyancing**

**General Property Matters**

**Wills**

**Probate**

**Notarial Services**

**82 High Street, Southwold, Suffolk IP18 6DP**

**Tel: 01502 724750 Fax: 01502 797930**

**[enquiries@mantins.com](mailto:enquiries@mantins.com)**

**[www.mantins.co.uk](http://www.mantins.co.uk)**



## Blythburgh Film Club Blythburgh Village Hall

### Choose your films at Blythburgh's own cinema

Films will normally be shown on the first Friday of every month. Doors open at 7pm for 7.30pm. Wine will be provided but you may bring your own. The White Hart provides fish and chips from 6pm to 7pm. £8 or £6 small. Bookings only.

Terms of the licence held by the hall restrict advertising the films to be shown. Parishioners who are members of Blythburgh M@tters or have signed up to the film club's mailing list will be notified automatically. If you would like to go on the list please contact Olive Forsythe on 01502 478521 or email [oliveforsythe@btinternet.com](mailto:oliveforsythe@btinternet.com) Details will also appear on the Parish Council notice boards.



There is no charge for the film but voluntary donations of £3 for adults and £1 for children towards the upkeep of the village hall and its services would be appreciated. If you miss any of the films, DVDs can be hired for £1.

Recent screenings include: Journey's End, The Man Who Invented Christmas, The Guernsey Literary & Potato Peel Society and *The Post*. Specialist nights with a meal and appropriate film have included a French Night, a Pie and Mash Night, an Ascot Night and a Henley Night at £10 a head. If there is a film you would like to see please contact Terry Goss on 01502 478356.

**Supported by the Blythburgh Latitude Trust**

# Notes from Daisy Bank LXXXVIII

I loved the perspex silhouettes of soldiers sitting in the church for Remembrance Day. Gave me quite a shock one morning when I opened up and became aware of them. Almost ghost like, I found seeing them quite emotional; perhaps the church could retain just one as an all year round statement. Perhaps a memory of those in this village whose names are on the village sign.

My Great Uncle 'Tiny' was killed in the trenches and my paternal Grandfather, his brother, was captured when his trench was overrun and spent most of the war in a German prisoner of war camp. He came back in 1918 and never ever spoke of his experiences. It wasn't until after he died that I knew anything about it. To me he was famous as one of the guards on the Flying Scotsman and bought me wonderful presents for birthdays and Christmas. I wonder, did they cope with the stress of it all by never speaking about it and just blotting it out of their minds?

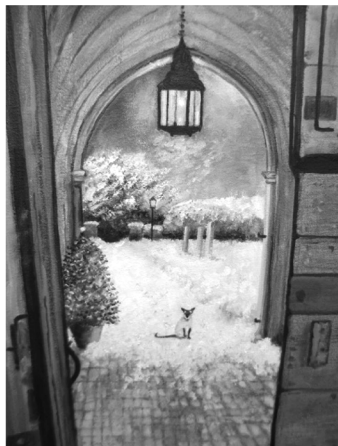
Having opened the church one day in December I was aware of a new bench at the top of the steps. I'd read the sign on the old bench but was unfamiliar with the people remembered on it. The new bench is in memory of John Veitch, his wife and their two sons who both died tragically too early.

For many years I played a weekly game of chess with a very elderly lady who lived in Park Lane in Southwold. The games continued when she moved to Leiston Old Abbey residential home. John Veitch, also a friend of hers, organised her 100th birthday party which B and I attended. A big, kind affable man with a distinctive voice and even more distinctive laugh, he was a real personality and it was sad when he died. There are too many 'grey' people in this world and John was definitely not grey. As for my chess lady, she died a few years after her 100th and as an executor of her will, she left enough money to B and me for us to realise a dream - a holiday in glorious Tuscany which was repeated many times after. When ever I think of John I also think of Noona, my good friend, and the hours of interesting conversation I had with her over an exciting game of chess.

2018 was not a good year in so far as too many people came to the end of their lives. But just before Christmas, Amelia, youngest daughter of Sue and Paul next door, got married in the church. She was born four months after I arrived in Blythburgh and has been part of our lives since then, watching her grow up and turning into the beautiful bride who walked up the lane with her Mum and Dad and all the family to the church that Saturday.

A simple understated wedding with a Christmas theme about it was all the better for that. What truly amazed me was that when Malcolm D, the vicar, pronounced them man and wife, the whole congregation burst into spontaneous cheers and clapping. Sad things in 2018 but ending with Amelia and a new beginning.

The picture is my Christmas card for 2018. Milo has been up to the church door but no further. As I have said before Milo and Raphael have come to an accommodation where the latter is designated the church cat and the former has set up a Raphael exclusion zone around his garden. Peace and goodwill reigns supreme in Daisy Bank!



**Paul Bennett**